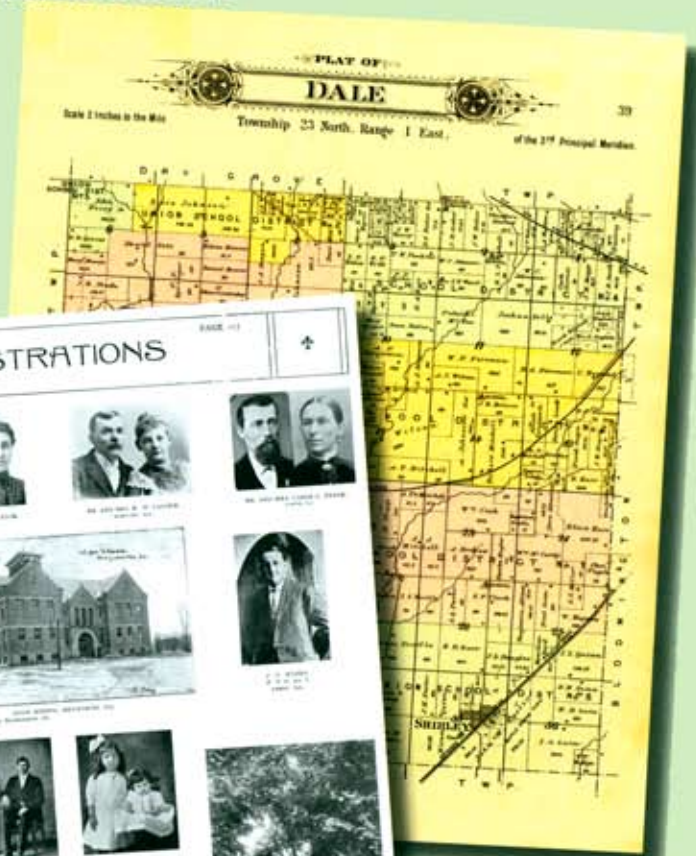


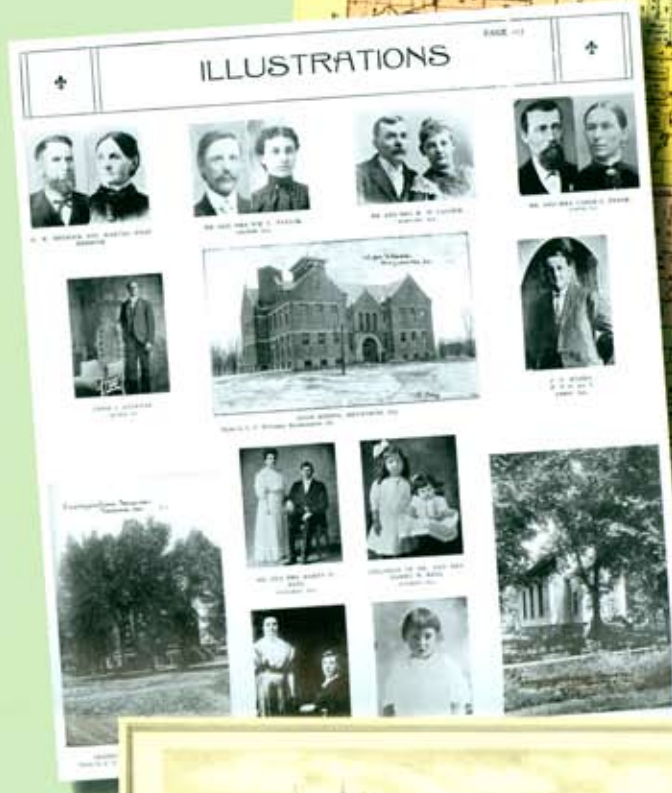
The McLean County Combined Indexed Atlases, 1856-1914

Non-member Order Form

Map of Dale Township — 1895



*The McLean County Museum of History
and the McLean County Genealogical
Society are proud to announce
the publication of one of our most
ambitious projects in our 100 year history.*



Illustrations — 1914

Lithograph — 1874

The plat book and maps from 1856 through 1914 will be available soon, in color and compiled in a library buckram cloth hardbound volume. This 11" x 14" coffee table book contains 386 pages of beautifully colored maps and lithographic plates illustrating county farms and houses. There is an index of 22,706 listing of landowners through the decades.

Digital reproductions of the original maps and lithographs will be produced with the most advanced Xerographic technology, resulting in perhaps the finest and most colorful plat book reproduction project ever undertaken in this country.

The \$225 price is a bargain! Originals of the 1874 atlas are such a collectors' item that they have sold for up to \$1000 at auction. The 1914 atlas features dozens of photographs by noted postcard photographer C.U. Williams.

This quality collectors' edition will be available about December 15th. Approximately 50 books will be available for ordering now and later in the gift shop. When supplies from the original order are exhausted, orders will be taken for delivery in February.

Profits from the sale of this publication will be directed to a mutual project of the two societies to improve our jointly operated library.

Because of press costs, we will have only a few copies available post publication. These will sell for \$225. If you want this atlas for yourself or a family member, order now.



Yes! Please reserve my copy of

The McLean County Combined Indexed Atlases, 1856-1914

Name _____

Address _____

City _____ State _____ ZIP _____

Phone _____

_____ copy/copies at \$225 each _____

Check MasterCard

VISA

Illinois sales tax: add \$16.88 per book _____
(No tax for out of state purchasers)

Card # _____

Shipping: add \$10 per book _____

Exp. Date _____

Pickup at Musuem _____ Total _____

Signature _____

Mail to:
McLean County Museum of History
200 N. Main Street
Bloomington, IL 61701